



## Mouse anti Melanoma HMB45 Monoclonal Antibody

Alternative Name(s): Melanosome

### Order Information

- **Description:** Melanoma (HMB45)
- **Catalogue:** 604-920
- **Lot:** See label
- **Size:** 100 ug/200 ul
- **Host:** Mouse
- **Clone:** HMB45
- **Application:** IHC(P), FC
- **Cross Reactivity:** Hu

### **ANTIGEN PREPARATION**

The cell membrane extract from meloma cell lines of SK-MEL.

### **BACKGROUND**

Anti-HMB45 is a useful melanoma immunohistochemical marker that reacts with antigen present on immature melanosomes. Anti-HMB45 is useful for identifying amelanotic melanoma from other neoplastic lesions with similar morphology. Melanosomes, the pigment granules that provide tissues with colour and photoprotection, are the cellular site of synthesis, storage and transport of melanin pigments. They are synthesised in mammalian skin melanocytes, in choroidal melanocytes and retinal pigment epithelial (RPE) cells in the eye, and in melanophores (a class of pigment-containing cells) in lower vertebrates. Although melanosomes are considered to be lysosome-related organelles, recent data show that their contents derive from early endosomal membranes. Disorders of pigmentation were among the first genetic diseases ever recognized because of their visually striking clinical phenotypes, resulting from defects of pigmentary melanocytes. These diseases may be most usefully considered as abnormalities of melanocyte development, function, or survival.

### **PURIFICATION**

The mouse IgG is purified by Protein A-Affinity Chromatography according to Isotyping

### **FORMULATION**

This affinity purified antibody is supplied in sterile Phosphate buffered saline (pH7.2) containing antibody stabilizer.

### **SPECIFICITY**

nan

### **STORAGE**

The antibodies are stable for 12 months from date of receipt when stored at -20oC. The antibodies can be stored at 2oC-8oC for one month without detectable loss of activity. Avoid repeated freezing-thawing cycles.

### **APPLICATIONS/SUGGESTED WORKING DILUTIONS\***

- Western Blot: 0.1-1 µg/ml
- ELISA: 0.01-0.1 µg/ml
- Immunoprecipitation: 2-5 µg/ml
- IHC: 2-10 µg/ml
- Flow cytometry: 5-10 µg/ml
- MW (kDa): 32-36
- Positive Control: Kidney Tissue
- Cellular Location: Cell Membrane

### **FOR RESEARCH USE ONLY.**

AbboMax, Inc 2528 Qume Drive, Suite 8, San Jose, California 95131, USA  
1 408-573-1898 (Tel). 1 408-573-1858 (Fax). [www.abbomax.com](http://www.abbomax.com) [info@abbomax.com](mailto:info@abbomax.com)



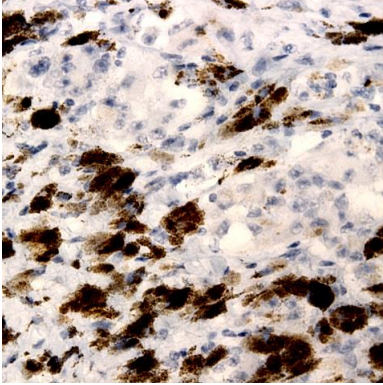
\*Optimal dilutions should be determined by researchers for the specific applications.

**FOR RESEARCH USE ONLY.**

AbboMax, Inc 2528 Qume Drive, Suite 8, San Jose, California 95131, USA  
1 408-573-1898 (Tel). 1 408-573-1858 (Fax). [www.abbomax.com](http://www.abbomax.com) [info@abbomax.com](mailto:info@abbomax.com)



## DATA ATTACHMENTS



Immunohistochemistry: Human Melanoma TMA (FFPE) stained with Mouse anti Melanoma (HMB45) (Cat# 604-920) at 1:200 for 10 min @ RT. Staining of formalin-fixed tissue requires boiling tissue sections in 10 mM Citrate Buffer, pH 6.0 for 10 min followed by cooling at RT for 20 min.

## REFERENCES

- Wasmeier C, et al. (2008) *J Cell Sci.* 121 (pt24): 3995–3999  
Spritz RA et al.. (2003) *Curr. Opin. Genet. Dev.* 13:284–289  
Raposo G, Marks MS (2007). *Nat Rev Mol Cell Biol.* 8 (10): 786–797

## FOR RESEARCH USE ONLY.

AbboMax, Inc 2528 Qume Drive, Suite 8, San Jose, California 95131, USA  
1 408-573-1898 (Tel). 1 408-573-1858 (Fax). [www.abbomax.com](http://www.abbomax.com) [info@abbomax.com](mailto:info@abbomax.com)